

ZETA USB Interfaces – Driver Installation v2.12.16

Microsoft® Windows® (both 32-bit and 64-bit) Driver Installation Guide for ZETA USB-Interfaces

Description	Interface Type	Interface Name
ZETA Optical Interface	Optical Head (EN 62056-21)	USB-OPT-2
ZETA Optical Interface	Optical Head (EN 62056-21)	USB-OPT-3
ZETA M-Bus Mini-Master	MBUS (EN 13757-2)	USB-MBUS-4
ZETA M-Bus Slave	MBUS (EN 13757-2)	USB-MBUS-2s
ZETA CS Active Interface	CS (IEC 62056-21)	USB-CS-2
ZETA CS Passive Interface	CS (IEC 62056-21)	USB-CS-1p
ZETA RS485 Interface	RS485 (EIA-485-A-98)	USB-RS485-2
ZETA M-Bus Analyzer	MBUS (EN 13757-2)	MBUS-SNIF-HW
ZETA AMR Interface	AMR (Modul Simulator)	USB-AMR-1
ZETA AMR Meter Simulator	AMR (Meter Simulator)	USB-AMR-1m
ZETA SPI-Tool	SPI-Bus	SPI-Tool-1d
ZETA MMI-Simulator	MMI2/MMI3/Sapphire	SPI-Tool-1d

1. Driver Installation

Please install the USB driver prior to connecting the ZETA USB Interface to the computer.

To install the driver, simply double click the setup file located in the root folder of the ZETA Driver CD:

„ZETA_USBDriver.exe“ (all Windows versions including Windows 10)

Once installed, you can connect the USB Interface to the computer.

When connected, two new entries are added in Windows Device Manager:

New USB device:

- Universal Serial Bus controllers: **USB Serial Converter**

New virtual COM port:

- Ports (COM & LPT): **USB Serial Port (COMx)**

The ZETA USB interface is now ready to use.

2. How to add a virtual COM port

The virtual COM port is not enabled by default on the following ZETA USB-Interface:

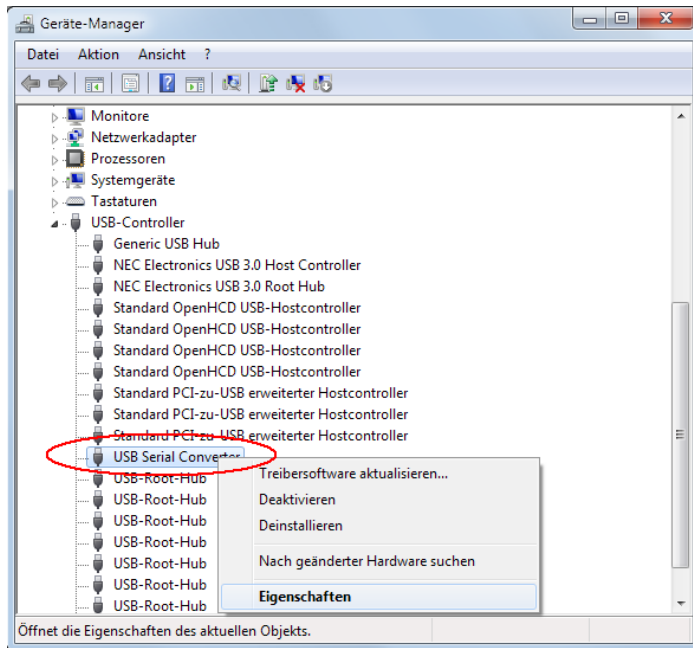
- ZETA Optical Head USB-OPT-2

To enable the virtual COM-port for the above device, go to

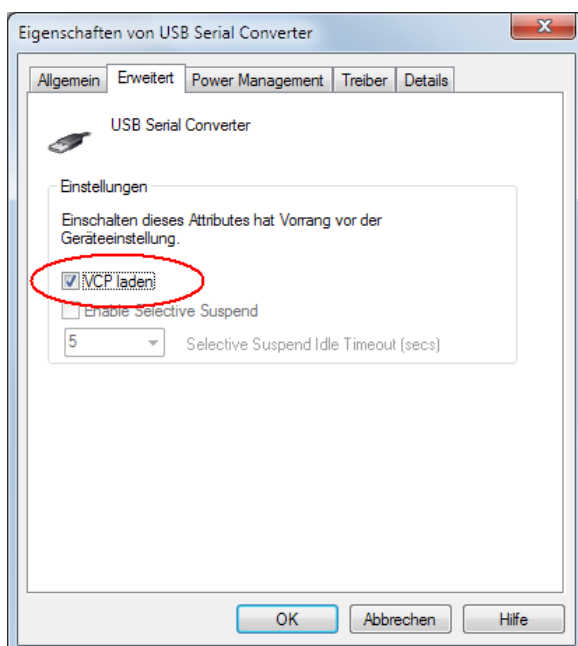
Start | Control Panel | System and Maintenance | System | Device Manager

(Device Manager is located under "Tasks" in the left hand column of the "System" menu).

A list of hardware will be displayed like the one shown below.



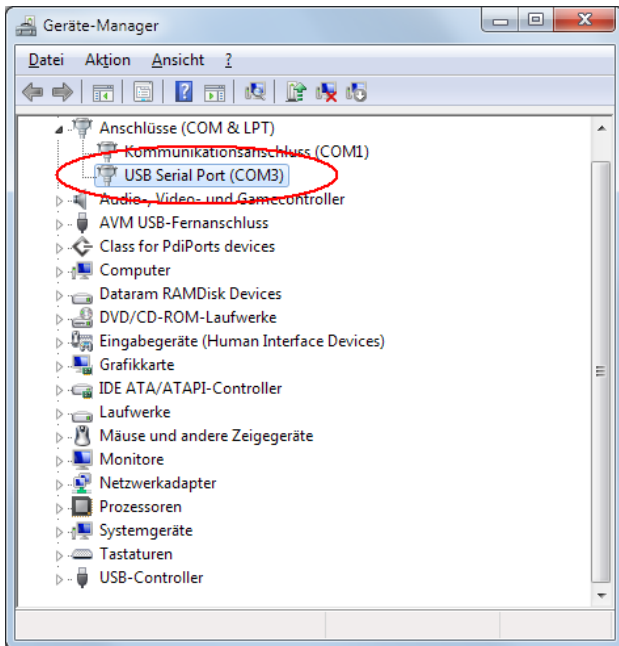
Open **Universal Serial Bus controller**, then right click to **USB Serial Converter | Settings**, go to tab **Advanced** and activate the **Load VCP** check box:



Click OK when done.

Please remove and reconnect the USB Interface now for the change to take effect.

A virtual COM Port is then added automatically and shown in Windows Device Manager:



Your computer will keep this setting, even when connecting the USB Interface to a different USB port.

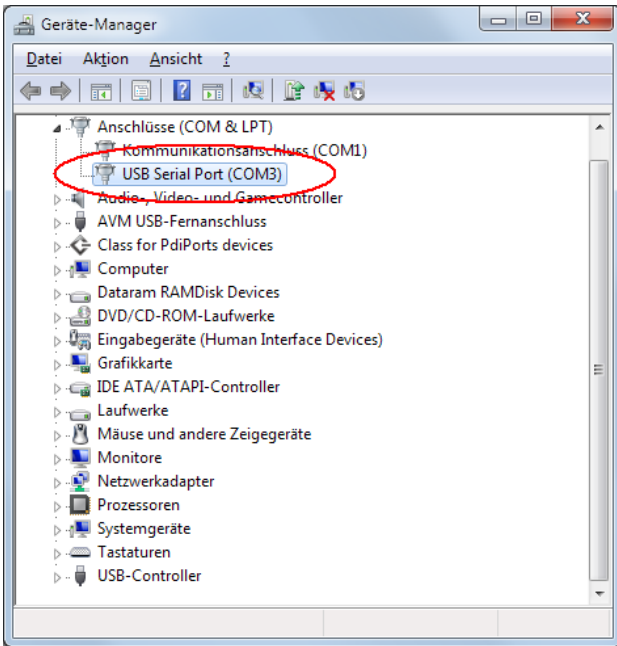
3. How to change virtual COM port number

Close all applications that access the COM port.

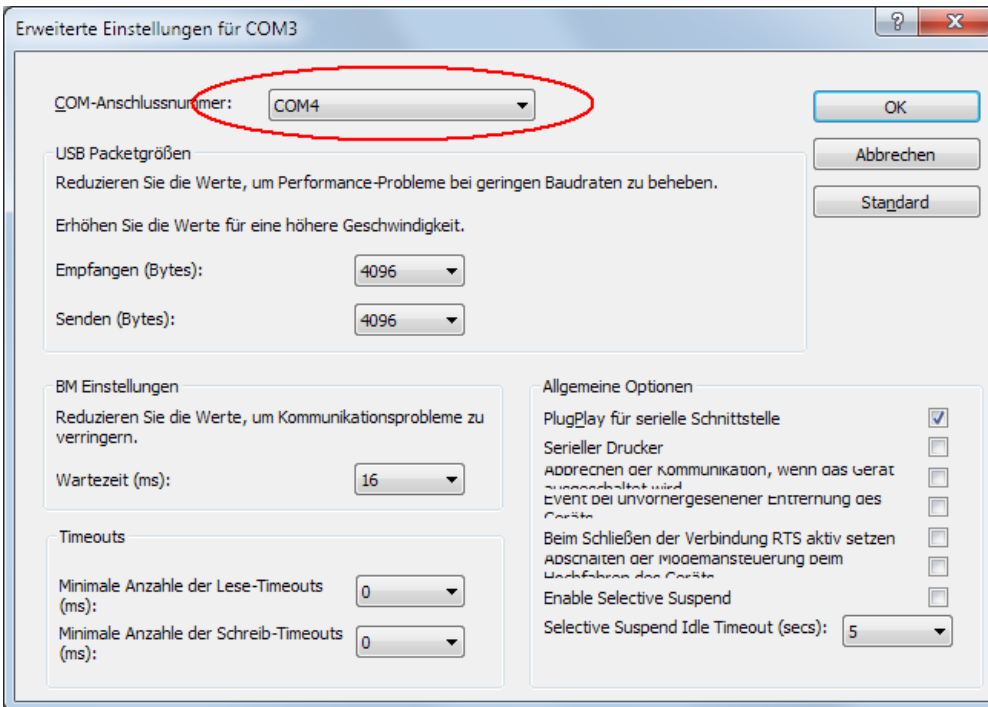
To change the COM port number of your USB interface, go to Windows Control Panel

Start | Control Panel | System and Maintenance | System | Device Manager

Double click ,USB Serial Port (COMx)'



Navigate to **Port settings -> Advanced...**



Select COM port and click Ok and close Windows Control Panel.

Your computer will keep this setting, even when connecting the USB Interface to a different USB port.